

TRANSFER 101

Presented by the SBCC Counseling Faculty

Who is a Transfer Student?

A student who has graduated from high school and has completed a regular session at a college or University is considered a transfer student. This does not include the summer following H.S. graduation.



Transfer Options

- University of California System (UC)
- California State University System (CSU)
- Independent/Private Institutions
- Out-of-State

In other

ANYWHERE!

SBCC: Preparing to Transfer

At SBCC students will complete:

- **General Education**
- **Lower division Preparation for Major**
- **Elective Units**

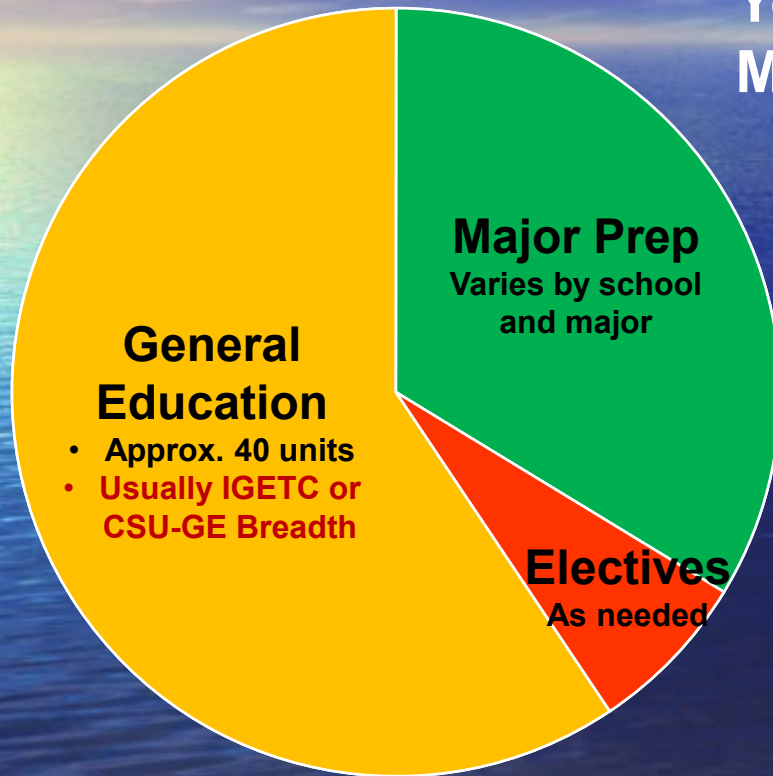
... and transfer as a ***JUNIOR***

This may take 2-3 years or more depending on:

- *Placement in math and English*
- *Total units taken each semester*
- *Grades earned*
- *Completion of lower division “major prep”*
- *Extra curricular activities: job, athletics, clubs*

SBCC: Preparing to Transfer

**Your Transfer Preparation
Must include:**



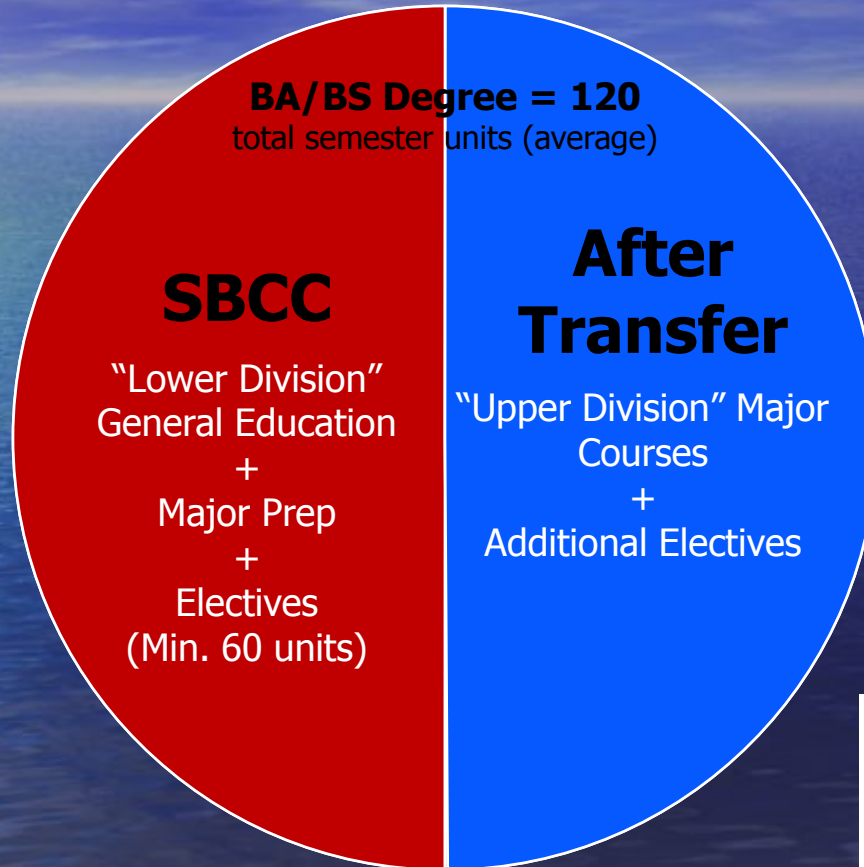
60 Transferable
Units Minimum

English 110 &
English 111

Transferable Math
(such as College
Algebra or Stats)

**NOTE: Engineering and Science majors
often complete less General Ed and more
Major Prep. Courses!**

The Big Picture

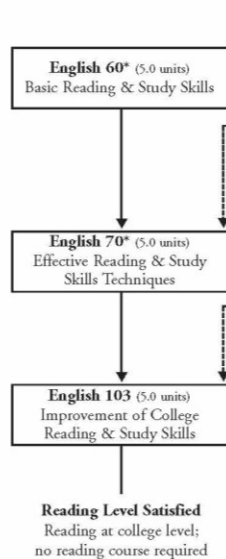


**Note: The UC & CSU
Will Accept up to 70
units for
transferable credit.**

ENGLISH FLOW CHART

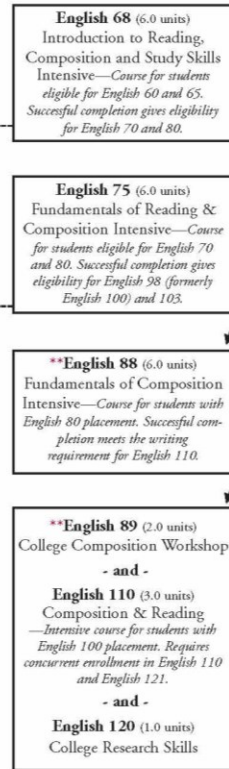
For enrollment information for Intensive Courses: sbcc.edu/esp

READING COURSES



**Completion of English 70 or eligibility for English 103 is required for entry into English 110*

INTENSIVE COURSES

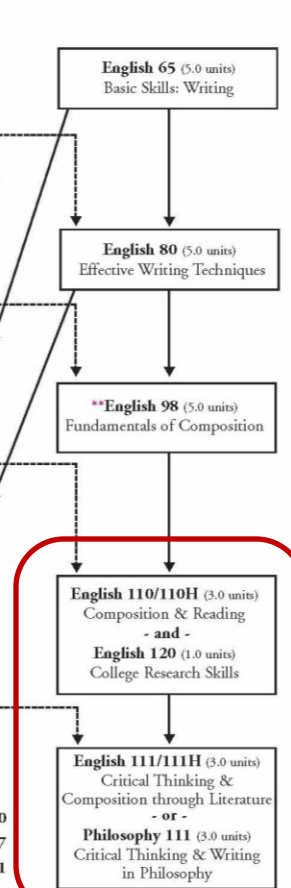


****English 98 previously English 100**

****English 88 previously English 117**

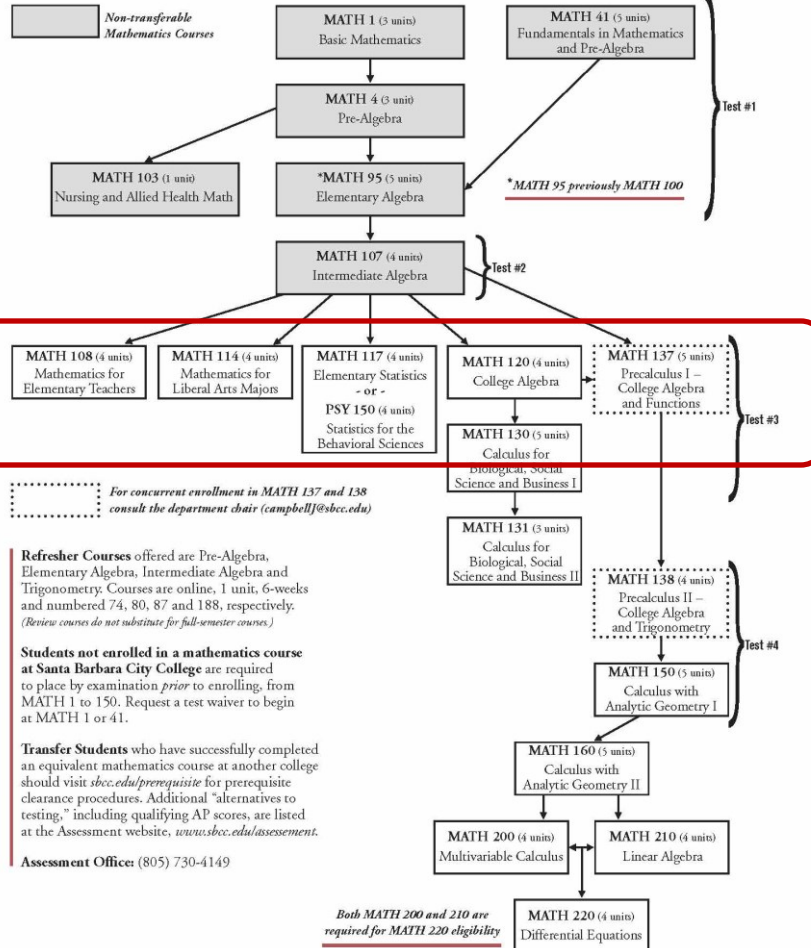
****English 89 previously English 121**

WRITING COURSES



MATHEMATICS FLOW CHART

For more information on completing 2 courses in 1 semester (Math 95 and 107; Math 107 and 120; Math 107 and 117) see sbcc.edu/esp.



What is Required to Transfer?

1. Complete/Meet the Minimum Admission Requirements
2. Complete/Meet the University *Selection Criteria Specifics*, including:
 - **Competitive GPA**
 - **General Education as Required or Recommended**
 - **Major Prep as Required or Recommended**

The Minimum

vs.

Being Competitive

60 semester/90 quarter UC transferable units

Minimum 2.4 GPA for CA residents

(2.8 GPA for nonresidents)

May Include

- Completion of IGETC
- Completion of Major Prep
- Achieving a competitive GPA in transferable coursework

The “**Seven Course Pattern**”¹

Two courses in English Comp/Critical Thinking

One transferable Math course

Four courses from at least two of these areas:

- Arts and humanities
- Behavioral and social sciences
- Biological and physical sciences

Note:

For many majors at most UC campuses, a 3.2 GPA is competitive (UC Berkeley, UCLA, and UCSD are the primary exceptions)

CSU'S

The Minimum

60 semester/90 quarter CSU
transferable units

Minimum 2.0 GPA for CA residents
(2.4 GPA for nonresidents)

"The Golden Four"

1

with a C or better in each course:

Two courses in English Comp/Critical
Thinking

One transferable Math course

One course in Oral Communication
(such as Speech or Debate)

vs.

Being Competitive

May Include

- ♦ Completion of a General Ed pattern such as IGETC or CSU-GE Breadth
- ♦ Completion of Major Prep
- ♦ Achieving a competitive GPA in transferable coursework
- ♦ Completion of a Transfer Degree (aka, ADT, AA-T, AS-T)
- ♦ A Supplemental Application (for example, Cal Poly SLO)

University of California vs. California State University

UC (10 Campuses)	CSU (23 Campuses)
Offers PhD & Professional Degrees in addition to Bachelors/Undergraduate Degrees	Up to Master's degree, except for a selected number of doctoral degrees, offered jointly with the UC or independent universities in CA
Emphasis on Theory & Research	Emphasis on "Applied" Learning
Quarter system, except Berkeley and Merced	Semester System (2/3's of campuses) Quarter system (1/3 of campuses)
Encourages Full-time Enrollment	Part-Time Enrollment Acceptable
238,000 students are enrolled	437,000 students are enrolled
Admission Standards Freshmen come from Top 12.5% of high school graduates Transfer application minimum : 2.4 GPA 60 units minimum	Admission Standards Freshmen - Top 33.3% of high school graduates Transfer application minimum: 2.0 GPA 60 Units minimum
Approx. Tuition & Fees: CA Residents: \$14,000 per year Nonresidents: \$38,024 per year	Approx. Tuition : All Students: \$5,472 per year Nonresidents: Additional \$372/semester unit

Independent/Private & Out-of-State Schools

- **Requirements vary, so research your options and know the requirements and deadlines for each school!**
- **Many schools allow transfer with less than 60 units**
- **Many schools recognize the IGETC and CSU-GE Breadth patterns**
- **For info on independent colleges and universities in California: www.aiccu.org**
- **For info on out-of-state colleges and universities: www.collegesource.org**

General Education: IGETC & CSU-GE

General Education Patterns: *An efficient and effective way to complete most or all of your General Education before transfer*

- **IGETC ("I-Get-See"):** Accepted at UC's & CSU's
- **CSU-GE Breadth:** Accepted at CSU's
- Not required for admission, but often recommended
- Usually not recommended for "high unit majors" such as Biological & Physical science, Engineering, and Computer Science majors

<http://articulation.sbccc.edu/IGETC/IGETC.pdf>

<http://articulation.sbccc.edu/CSU/CSUGE.pdf>

IGETC & CSU GE Breadth, cont.

- Each GE Pattern is organized by subject area
- To complete, You must fulfill the required number of courses in each subject area (usually 2-3 courses)
- Upon completion (Approx. 40 units total), apply for *Certification*

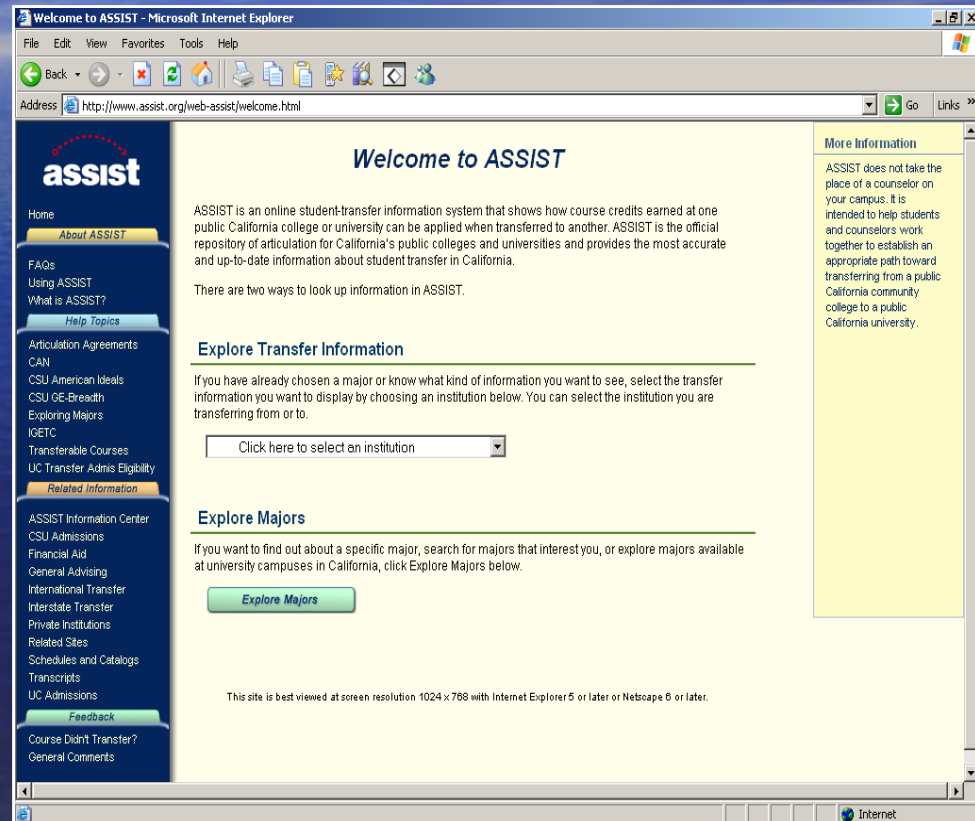
IGETC

CSUGE

ASSIST.ORG: Major Prep

www.assist.org

- Find the requirements for your major at your transfer school (CA schools only)
- Find the *articulated* courses you can take at SBCC for that major
- Find *all* of the UC or CSU campuses which offer your major!



Transfer Support Resources

Transfer Center

1st floor of the Student Services (SS) Building

Transfer Achievement Program – “TAP”

iPATH

Transfer Academy

Transfer Achievement Program (TAP)

For historically underrepresented student groups, first generation college students, students from low-income families, and undocumented/AB 540 students

BENEFITS OF MEMBERSHIP INCLUDE

- Assistance with transfer exploration and planning
- Increase access to financial aid and scholarship information
 - Visits to University Campuses
 - Transfer-related workshops

www.sbcc.edu/TAP



*For students who are completing IGETC
as part of their transfer pathway*

BENEFITS OF MEMBERSHIP

- Smaller Classes
- Streamlined Course Planning
- Easy access to academic counselors and tutors
- Interactive teaching

www.sbcc.edu/iPATH

iPATH

Your IGETC GE Pathway

OUR COMMITMENT TO YOU:

- Streamlined Course Planning
- Small classes
- Tutor for Each Class
- Interactive Learning



CAL POLY

UC San Diego



UC SANTA CRUZ



Channel Islands



CSUN

UC Irvine

UC DAVIS

...AND MORE!

IGETC

1A - ENGLISH COMPOSITION (1)

ENG 110

1B - CRITICAL THINKING (1)
ENGLISH COMPOSITION

ENG 111

PHIL 111

1C - ORAL COMMUNICATION (1)

COMM 121

COMM 131

COMM 141

2A - MATHEMATICS (1)

PSY 150

MATH 120

AREA 3 - ARTS & HUMANITIES (3 Courses/At least 1 from each)

3A - ARTS (At least 1)

ART 101

3B - HUMANITIES (At least 1)

CHST 101 (or Area 4)

PHIL 101

ETHS 101 (or Area 4)

HIST 102 (or Area 4)

4 - SOCIAL AND BEHAVIORAL SCIENCES (3)

ECE 102

SOC 101

SS 101

HIST 110 (or Area 3B)

PSY 100

COMM 151

5A - PHYSICAL SCIENCES (1)

PHSC 107 (+Area 5C)

5B - BIOLOGICAL SCIENCES (1)

ANTH 101

ENVS 110/111 (+ Area5C)

5C - LABORATORY ACTIVITY (1)

ADDITIONAL TRANSFERABLE COURSES OFFERED: BUS 101, PD 100, & PD 110

Transfer Academy

*For students who plan to take advantage of a
Transfer Admission Guarantee (TAG)*

BENEFITS OF MEMBERSHIP:

- Personal assistance with transfer and academic planning
- Increased access to TAG information, updates, and advising
 - Early review of academic transfer profile
 - Transfer-related workshops

www.sbccc.edu/TransferAcademy

TAG

For an up-to-date list of
TAG's, with links:
www.sbccc.edu/TAG

Guaranteed Admission

American University of Paris (Paris, France)
Antioch University (Santa Barbara)
Arizona State University¹
California State University, Bakersfield
California State University, Channel Islands²
Brandman University (CA)
Historically Black Colleges and Universities (HCBU)
Northern Arizona University
Pepperdine University³
Portland State University (OR)
Syracuse University (NY)
School of the Art Institute of Chicago (IL)
University of Arizona
University of the Pacific (CA)
University of California Davis
University of California Irvine
University of California Merced
University of California Riverside
University of California Santa Barbara
University of California Santa Cruz
University of La Verne
Western Oregon University
Whittier College

Additional Options For International Students:

California State University, San Marcos
California State University, Northridge
San Francisco State University

¹—"Assured Admission"

²— Guarantee is available for CSUQ Extended University (Santa Barbara) only.

³— Graziadio School of Business and Management ONLY; LA, Encino, Irvine, or Online ONLY

Honors Transfer Agreements (CA)

Not Guaranteed Admission; Advantages vary by school

Chapman University	Mills College
La Sierra University	Pitzer College
Loyola Marymount University	Pomona College
UCLA	

Typical TAG Requirements...

- Minimum GPA in all Transferable Courses
- Certain courses (such as math and English) completed by a certain term prior to transfer
- Minimum number of transferable units completed at time of TAG application.

... ***May Include***

- Major Preparation, as required by major

Required UC TAG GPA's for Fall 2018

<u>UC Campus</u>	<u>Required GPA</u>
UC Davis	3.2 – 3.3
UC Irvine	3.4
UC Merced	2.8 – 3.0
UC Riverside	2.7 – 3.5
UC Santa Barbara	3.2*
UC Santa Cruz	3.0

**The required GPA for UCSB may include Fall 2017 grades*

Your Last Year at SBCC:

Fall Semester:

August: Start working on your UC application

September: Submit your UC TAG application

October – November: Submit your CSU applications

November: Submit your UC application

Spring Semester:

January: Update your UC application with Fall grades

January - March: Update your FAFSA for financial aid

Mid-Semester through May: Receive admissions decisions from your transfer schools

June 1st: The deadline to submit your Statement of Intent to Register (SIR)

July 1st: Submit all transcripts to your transfer destination

Important Tips & Reminders

- Meet with a Counselor *at least once per semester*
- Know where to look for the GE and Major courses you need
- Know the difference between *Transferable*, *Not Transferable*, and *Articulated* courses
- Many General Education courses may be taken on a Pass/No Pass basis. The UC will accept up to 14 units of Pass/No Pass credit. Consult with a SBCC counselor for more info
- Don't Settle for C's!!!!

Additional Transfer Tools & Resources

GENERAL AND UNIVERSITY-SPECIFIC TRANSFER RESOURCES

- www.collegeboard.com Extensive college information and tools for career and major exploration
- www.collegesource.org Easy access to college catalogs and campus profiles
- www.CaliforniaColleges.edu contains information about all California colleges and has the following tools:
 - Matching Assistant - Find campuses that meet your specific requirements
 - Distance Search - Find the campus closest to any zip code
 - Comparative View - Compare colleges and universities in California
 - Key Facts - Obtain a brief overview of participating campuses Campus Tours
- <https://www2.calstate.edu/apply> Search, compare, and apply to CSU campuses
- www.universityofcalifornia.edu/apply Search, compare, and apply to UC campuses.
- www.uctransfer.org Information on UC Transfer Admission Guarantees (TAGS), transfer planning, costs, etc.
- www.aiccu.edu provides an on-line guidebook for California Private/Independent colleges and universities
- www.cvc.edu Find online course offering at public and private colleges and universities in California

CAREER AND MAJOR EXPLORATION RESOURCES

- www.eureka.org Account code: type VUOHNDU
- www.assist.org UC & CSU Articulation
- www.collegesource.org Access to University profiles
- www.sbccc.edu/careercenter SBCC Career Center